

QUESTIONS & ANSWERS

Kill your exam at first Attempt



VCS-371 Dumps
VCS-371 Braindumps
VCS-371 Real Questions
VCS-371 Practice Test
VCS-371 dumps free



Veritas

VCS-371

Administration of Veritas NetBackup 7.5 for Windows

<http://killexams.com/pass4sure/exam-detail/VCS-371>



QUESTION: 199

By default, how long will a failed restore job remain in an Incomplete state prior to being moved to a Done state?

- A. one day
- B. three days
- C. seven days
- D. until the administrator cancels the restore job

Answer: C

QUESTION: 200

An administrator tries to suspend an active job from the Symantec NetBackup Activity Monitor but discovers that the option is grayed out. What is preventing the administrator from suspending the job?

- A. Encryption is enabled.
- B. The parent job is still active.
- C. Multiplexing is enabled.
- D. Checkpoint restart is disabled.

Answer: D

QUESTION: 201

Which two are asset group types? (Select two.)

- A. active
- B. dynamic

- C. tagged
- D. static
- E. auto created

Answer: B, D

QUESTION: 202

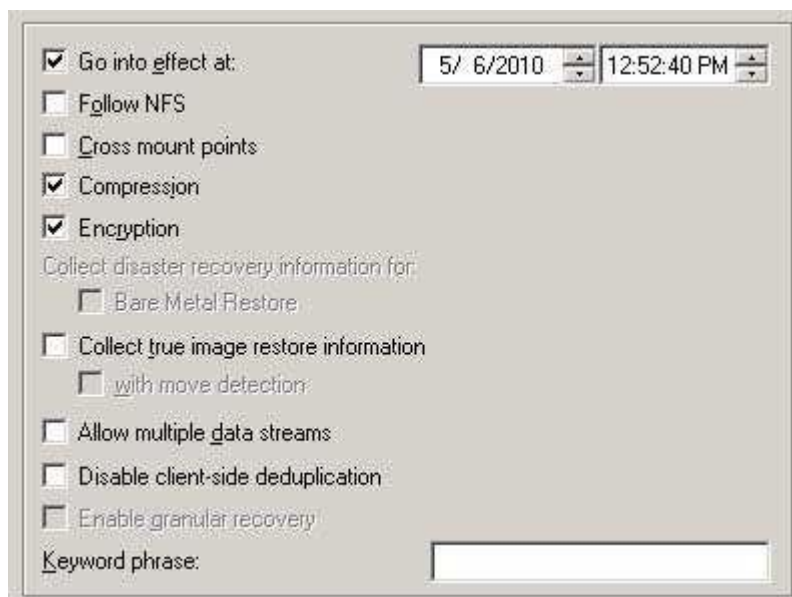
What is the image removal behavior for relocated images from a Disk Staging Storage Unit when the high water mark is reached during a backup?

- A. Symantec NetBackup waits for the backup to complete before removing the oldest images until the low water mark is reached.
- B. Symantec NetBackup waits for the backup to complete before removing images with the lowest rank data classification until the low water mark is reached.
- C. Symantec NetBackup removes the oldest images until the low water mark is reached.
- D. Symantec NetBackup removes images with the lowest rank data classification until the low water mark is reached.

Answer: C

QUESTION: 203

Refer to the exhibit.



What will be the outcome of the policy shown in the exhibit?

- A. The client will compress then encrypt the data before sending it to the media server.
- B. The client will compress the data and then the media server will use tape drive encryption.
- C. The client will send the data to the media server, which will compress and then encrypt the data.
- D. The client will encrypt the data before sending it to the media server.

Answer: A

QUESTION: 204

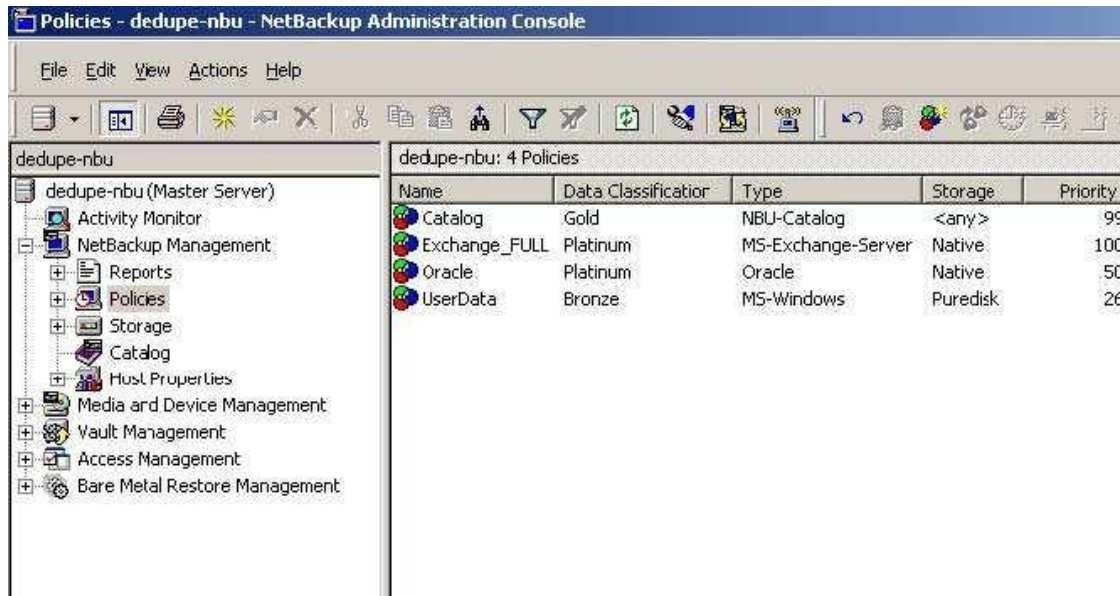
Where are assets stored?

- A. Assets.XML
- B. Production database
- C. RMS database
- D. ADAM

Answer: D

QUESTION: 205

Refer to the exhibit.



An administrator must create a new backup policy for a critical application. The administrator needs to ensure the backup job is assigned the first available resource and the backup images on disk are retained as long as possible. How should the new policy be configured?

- A. Data Classification set to Platinum and Priority set to 101
- B. Data Classification set to Platinum and Priority set to 01
- C. Data Classification set to Gold and Priority set to 999
- D. Data Classification set to Platinum and Policy Type set to Critical

Answer: A

QUESTION: 206

An administrator is unable to back up all client data within a given backup window. The current configuration is displayed below.

One Master/Media server 4x 1GB network connection

4GB Fibre Channel HBA to tape Library with 4 LTO3 tape drives (max 4 drives) 150 clients with 100 MB network connections. How should the administrator improve performance and decrease backup elapsed time?

- A. Enable multiplexing in the policy schedules
- B. Replace LTO3 drives with LTO5 drives
- C. Replace the network switch with a 10GB switch

D. Enable client side compression

Answer: A

QUESTION: 207

What is one of the steps that must take place before comparing entitlements of a control point?

- A. generate entitlement report
- B. request to approve entitlements
- C. approve entitlements at least once
- D. approve entitlements at least twice

Answer: C

For More exams visit <https://killexams.com/vendors-exam-list>



Kill your exam at First Attempt....Guaranteed!